



Computing Services Centre
香港城市大學
City University of Hong Kong

USER GUIDE FOR **USING AV EQUIPMENT**

Run Run Shaw Creative Media Centre

4/F Classroom M4003 (Three Projection)

For IT or AV support, please contact the CSC Service Desk at **3442-8340**

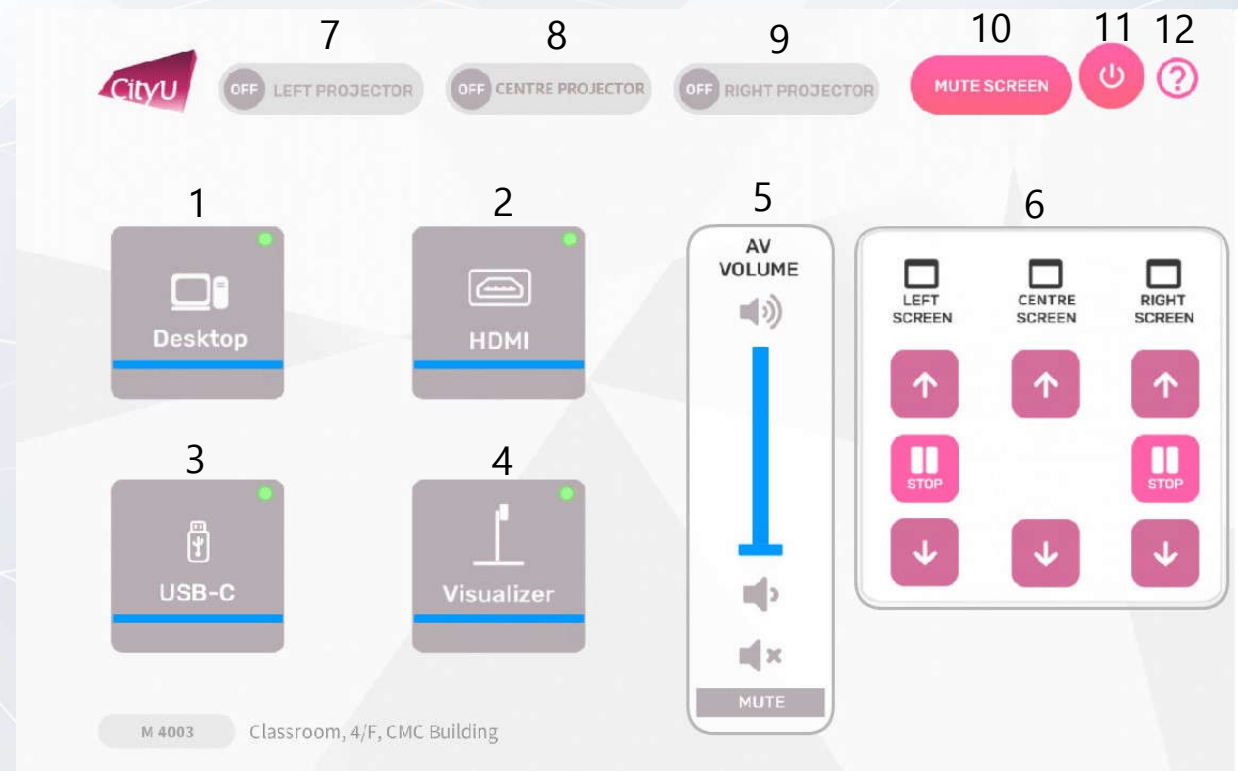
AV Control Panel

Display Source Select

1. Desktop Computer
2. HDMI Input (Use HDMI devices)
3. USB-C Input (Use USB-C devices)
4. Presentation for Visualizer

Other Control

5. Volume Control
6. Screen Control
7. Left Projector (On/Off)
8. Centre Projector (On/Off)
9. Right Projector (On/Off)
10. Mute Projector(s)
11. System Off
12. Help information



Using AV Equipment

Operation procedure of the Desktop Input

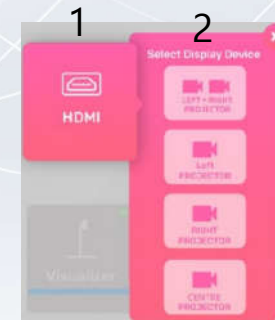
1. Press "Desktop " button
2. Select Display Devices (Left + Right Projector/ Left Projector / Right Projector / Centre Projector)

Operation procedure of the HDMI Input

1. Press "HDMI " button
2. Connect the device to HDMI cable
3. Select Display Devices (Left + Right Projector/ Left Projector / Right Projector / Centre Projector)

Operation procedure of the USB-C Input

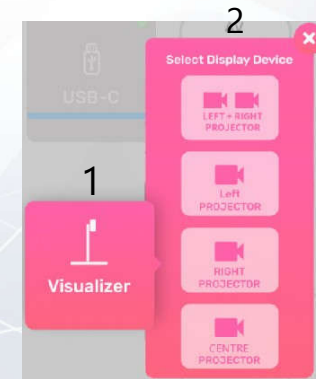
1. Press "USB-C" button
2. Connect the device to USB-C cable
3. Select Display Devices (Left + Right Projector/ Left Projector / Right Projector / Centre Projector)



Using AV Equipment

Operation procedure of Visualizer Input

1. Press "Visualizer" button
2. Select Display Devices (Left + Right Projector / Left Projector / Right Projector / Centre Projector)



System OFF

1. Confirm Power off
2. Cancel Power off

